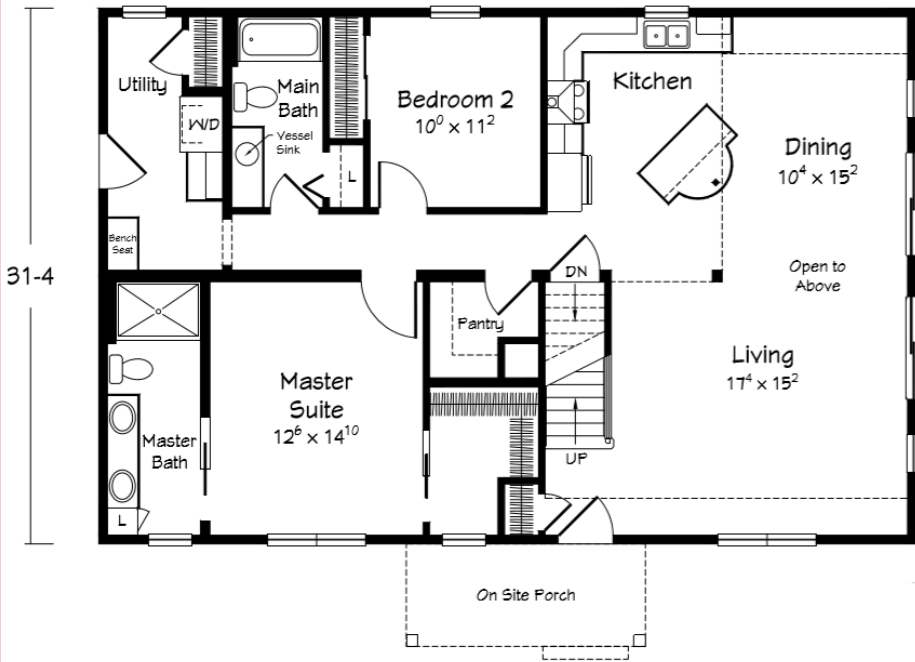




“Bayview”

48-0



Upper Level

Unfinished Bonus Room - 494 Sq Ft

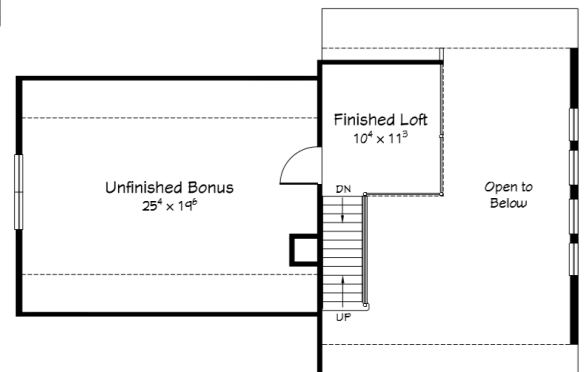
Living Space

Finished First Floor - 1504 Sq Ft

Finished Loft - 120 Sq Ft

1624 Square Feet (Finished)

2118 SF Total (w Bonus Room)



Visit our website to take a Virtual Tour of this model!



79 Kendall Street
 Clifton Springs, NY 14432
 (315) 462-2921
www.keymodularhomes.com

STANDARD “TURN KEY” PACKAGE FEATURES

FULL BASEMENT (w/ Egress) ~ EXCAVATION/GRADING ~ DRIVEWAY ~
PLUMBING & ELECTRIC CONNECTIONS ~ WELL PUMP PACKAGE or MUNICIPAL WATER LINE
SEPTIC SYSTEM or MUNICIPAL SEWER LINE ~ FORCED AIR HEATING SYSTEM (95% Efficiency)
GAS WATER HEATER ~ WHOLE HOUSE VENTILATION SYSTEM ~ BLOWER DOOR TEST
SEAMLESS GUTTERS ~ STAMPED BASEMENT PRINTS ~ BASEMENT WALL INSULATION
(Refer to our “Turn Key” Package Features Document for more Detail)

STANDARD PACKAGE ALSO INCLUDES

DELIVERY OF HOUSE ~ SETTING HOUSE, INCLUDING CRANE & CREW ~ STAMPED HOUSE PRINTS
FLOORING INSTALLED ~ EXTERIOR SIDED
INTERIOR TRIM & FINISH ~ HOUSE PROFESSIONALLY CLEANED
CONSTRUCTION GARBAGE REMOVED FROM SITE
FULL TIME PRODUCTION STAFF ~ FULL TIME SERVICE DEPARTMENT

FEATURES COMMONLY ADDED TO OUR “TURN KEY” PACKAGE

GARAGES ~ PORCHES ~ DECKS ~ AIR CONDITIONING ~ FIREPLACES

The Bayview is Displayed with the Following Optional Features

- 6’x14’ Vaulted Gable Porch w/ Composite Wrapped Beams, 1/2 Stone Columns, Composite Decking & Hidden Fasteners
- Prow Roof
- Expressions Vinyl Siding
- Large Trapezoid Windows
- 6 Lite Craftsman Front Door
- Black Tustin Lever Front Door Lockset
- Half Glass with Internal Blind Side Door
- Black Hancock Round Side Door Lockset
- Prairie Grids in Sliding Glass Doors
- 5” Vinyl Lineals - Side Windows & Front Door
- 5” Vinyl Lineals - Two Sliding Glass Doors
- Laminate Rare Vintage Flooring - (DR, Kitchen, Hall)
- LVT Laminate Flooring - (Foyer)
- Flat 3-Panel Interior Doors
- 36” Interior Doors - Master Bath & WIC
- Additional GFI Exterior Receptacle
- Black Exterior Lights
- Exterior Recessed LED Lights - Two in Porch
- Exterior Recessed LED Lights - Four to Front
- Exterior Recessed LED Lights - Four to Gable End
- Wired for Paddle Fans - (Vault & Bed #1)
- 5 Eyeball Directional Lights - (LR/DR)
- 3 LED Recessed Can Lights - (Hall)
- 2 Sconce Lights - (Stairwell)
- 3 Pendant Lights - (Kitchen Island)
- 3 Undercabinet Lights - (Kitchen)
- 3 LED Recessed Can Lights - (Kitchen)
- Recessed Light w/ Diffuser over Tile Shower
- 8’x26’ Deck w/ Vinyl Rail & Half Posts, Black Spindles w/ Composite Decking
- Finished Loft - 10’6”x11’4”
- True Vault ‘Chalet’ Ceiling (LR/DR)
- Barnwood 1x8 Shiplap Ceiling in Vault - (White)
- 8’6” Ceiling Height
- Bungalo Molding Package
- Shiplap Wall Accent in DR - 3’ Height
- Painted Kitchen Island Cabinets
- Beadboard - 3 Sides of Island
- Garbage Bin Base Cabinet
- Microwave Base Cabinet
- Extended Refrigerator Overhead Cabinet
- 36” Overhead Cabinets in Kitchen
- Undercabinet Molding
- Corian Kitchen Countertops
- Corian Kitchen Sink - Double Bowl
- Ceramic Tile Backsplash w/ Accent
- Metal Tile Backsplash at Stovetop
- Chimney Style Range Hood - Black Stainless
- Wood (solid) Pantry Shelving - 3 Rows
- Built-in Cabinetry for Stackable W/D
- Utility Base & Overhead Cabinets w/ Shelf
- Utility Bench Seat w/ Shiplap & Pegs
- Laminate FX Counter - Master Bath
- Laminate Bullnose Edge - Master Bath
- 42”x60” Tile Shower w/ FG Pan & Glass Door
- Vessel Sink ‘Frosted’ - Main Bath
- Corian Countertop - Main Bath
- Glass Tile Backsplash - Main Bath
- Larger FG Tub/Shower - Main Bath