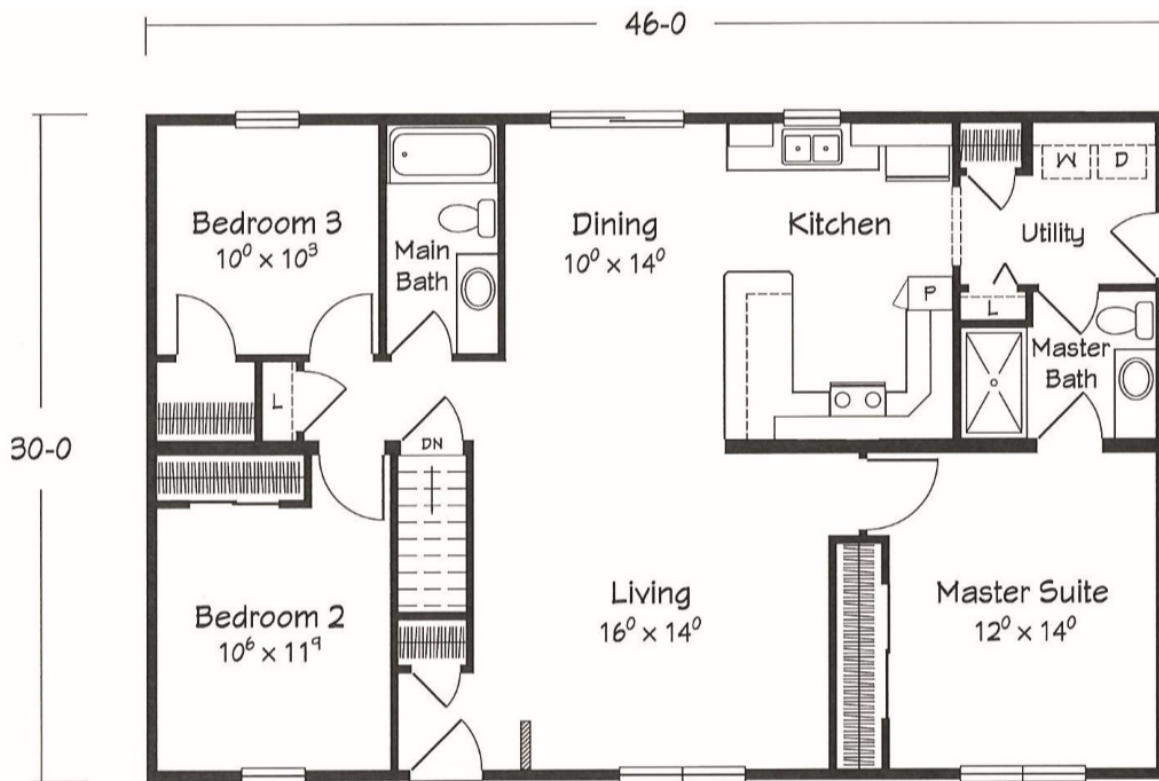


“Manchester”



30'0" x 46'0" - Approx. 1376 Sq.Ft.

Visit our website to take a Virtual Tour of this model!



79 Kendall Street
Clifton Springs, NY 14432
(315) 462-2921
www.keymodularhomes.com



In an effort to showcase Key Homes quality of construction, everything featured in the “Manchester” is standard, except the Appliances & Porch. A Key Homes customer can be confident that quality is a standard, not an option.

STANDARD TURN KEY PACKAGE FEATURES

FULL BASEMENT * EXCAVATION/GRADING * DRIVEWAY
PLUMBING CONNECTIONS * ELECTRIC CONNECTIONS
WELL PUMP PACKAGE or MUNICIPAL WATER LINE
SEPTIC SYSTEM or MUNICIPAL SEWER LINE
FORCED AIR HEATING SYSTEM (96% Efficiency) * GAS WATER HEATER
SEAMLESS ALUMINUM GUTTERS * BASEMENT WALL INSULATION
(Refer to our “Turn Key” Package Features Document for more Detail)

STANDARD PACKAGE ALSO INCLUDES

DELIVERY OF HOUSE * SETTING HOUSE, INCLUDING CRANE & CREW
STAMPED HOUSE PRINTS * STAMPED BASEMENT PRINTS
FLOORING INSTALLED * EXTERIOR SIDED
INTERIOR TRIM & FINISH WORK
HOUSE PROFESSIONALLY CLEANED
CONSTRUCTION DEBRI REMOVED FROM JOB SITE
FULL TIME PRODUCTION STAFF TO OVERSEE CONSTRUCTION
FULL TIME SERVICE DEPARTMENT

FEATURES COMMONLY ADDED TO OUR TURN KEY PACKAGE

GARAGES * PORCHES * DECKS * AIR CONDITIONING * FIREPLACES